

**UKCA simulated global aerosol fields in the UK Met Office Unified Model at v6.6**

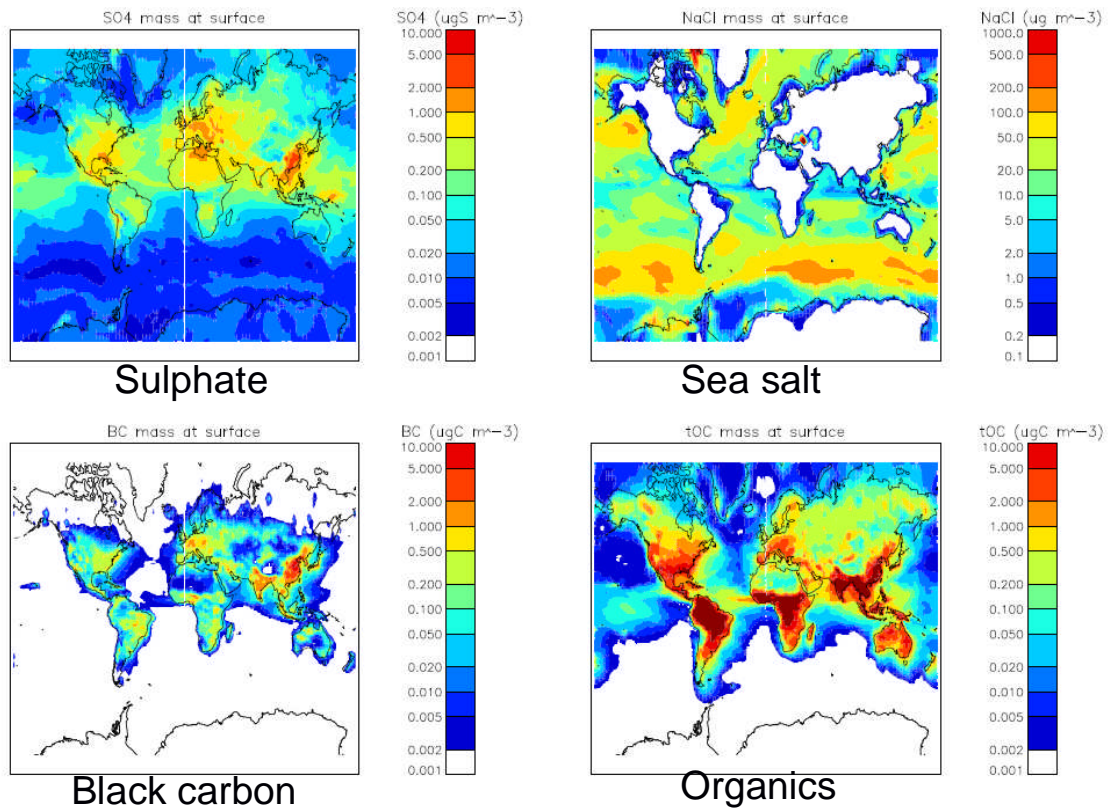


Figure 1. Surface maps of UKCA-UM simulated component mass concentrations

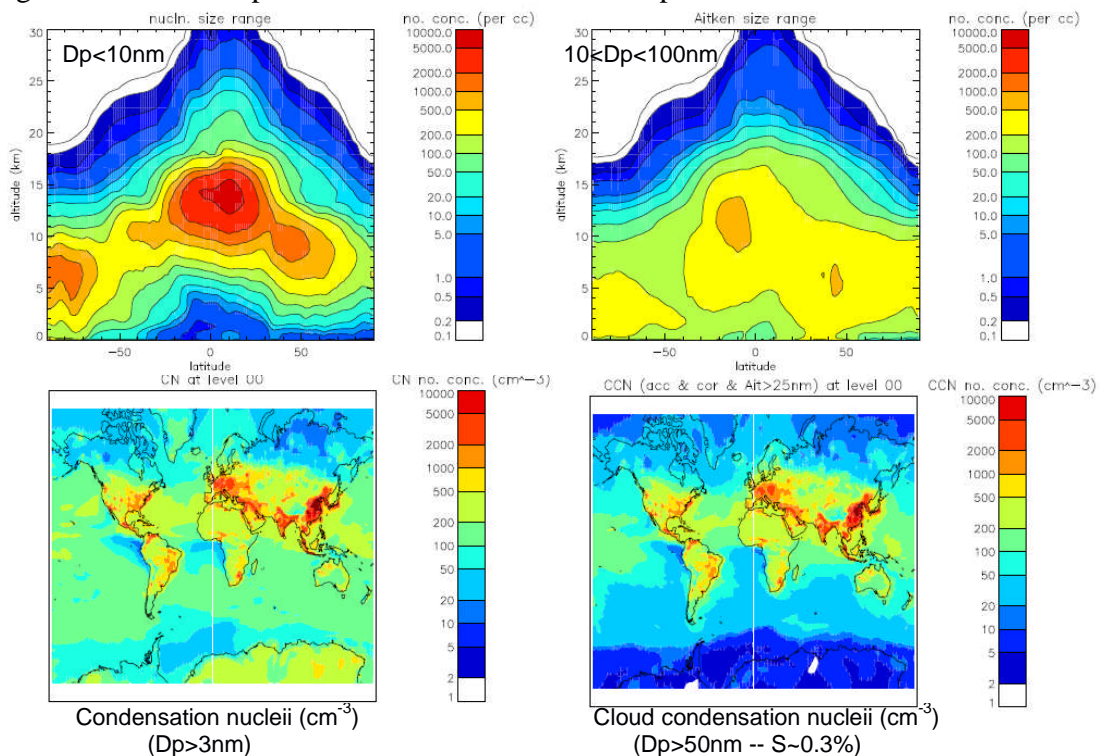


Figure 2: Zonal mean plots of UKCA-UM simulated size-resolved particle number. Lower 2 panels show global surface maps of number concentration of condensation nuclei (CN, particles larger than 3nm dry diameter) and cloud condensation nuclei (CCN, particles >50nm dry diameter, which is representative of an assumed supersaturation of 0.3% in cloud).